



**Southern Cross Care (Tas.) Inc.**  
*Caring across Tasmania*



**Springhaven Lifestyle Village** | 38 Gordons Hill Road, Lindisfarne  
Website: [www.scctas.org.au/independent-living](http://www.scctas.org.au/independent-living)  
Telephone: 03 6282 5410

*Plans and images are indicative and subject to change*



**Southern Cross Care (Tas.) Inc.**  
*Caring across Tasmania*



**Springhaven Lifestyle Village** | 38 Gordons Hill Road, Lindisfarne  
Website: [www.scctas.org.au/independent-living](http://www.scctas.org.au/independent-living)  
Telephone: 03 6282 5410

**Master Plan**

*Plans and images are indicative and subject to change*



Southern Cross Care (Tas.) Inc.  
*Caring across Tasmania*



## Townhouse A Balcony

3 Bedroom  
2 Bathroom  
Garage

Lounge	4.1 x 4.9m
Dining	6.9 x 3.0m
Bed 1	3.6 x 4.8m
Bed 2	3.2 x 3.4m
Bed 3	3.2 x 4.8m
<b>Total</b>	129m <sup>2</sup>
Garage	27m <sup>2</sup>
<b>Total Internal</b>	156m <sup>2</sup>





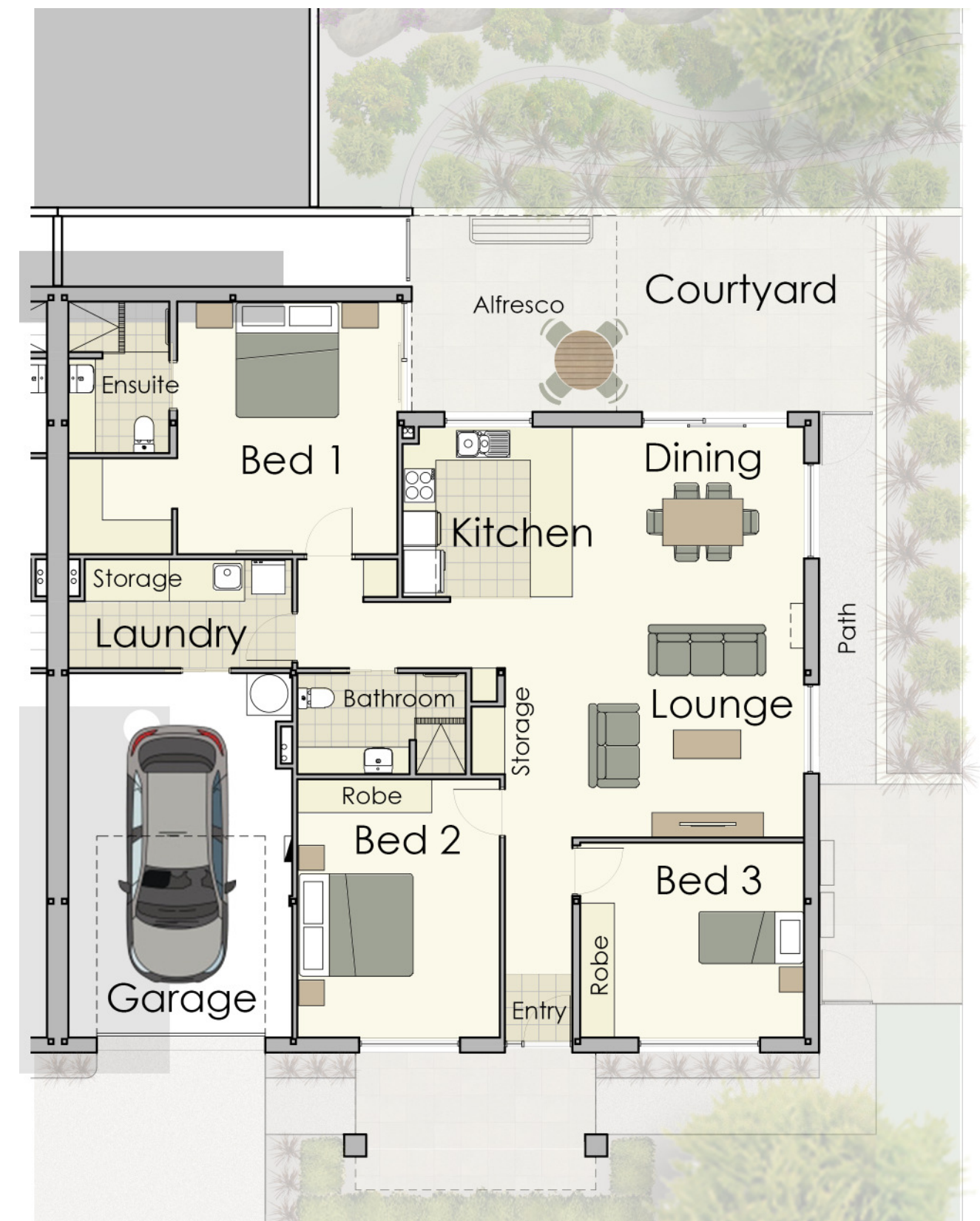
Southern Cross Care (Tas.) Inc.  
*Caring across Tasmania*



## Townhouse A Courtyard

3 Bedroom  
2 Bathroom  
Garage

Lounge	5.3 x 4.3m
Dining	4.1 x 3.0m
Bed 1	3.9 x 4.5m
Bed 2	3.6 x 4.6m
Bed 3	4.0 x 3.4m
<b>Total</b>	130m <sup>2</sup>
Garage	26m <sup>2</sup>
<b>Total Internal</b>	156m <sup>2</sup>





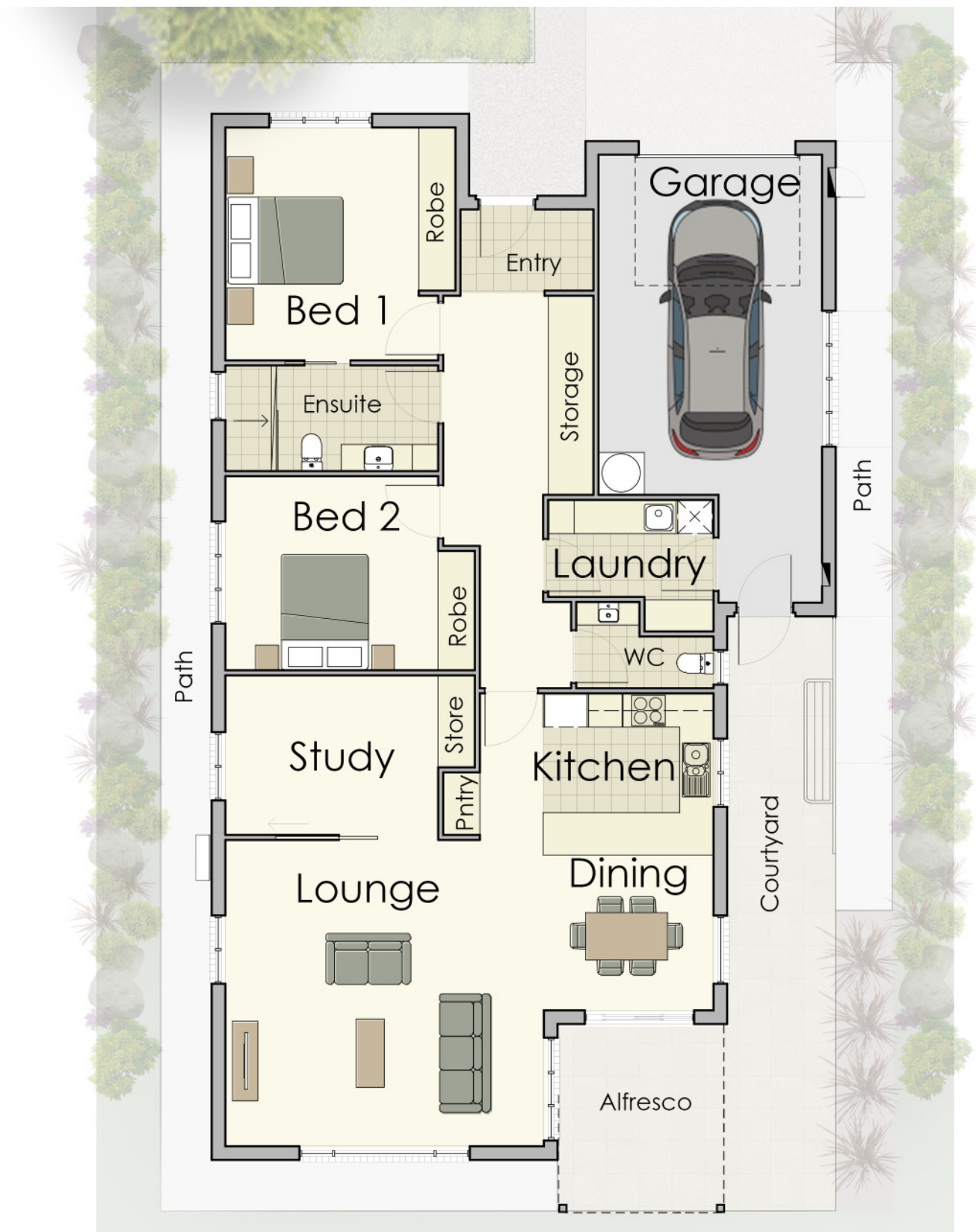
Southern Cross Care (Tas.) Inc.  
*Caring across Tasmania*



## Villa B

2 Bedroom + Study  
1 Bathroom + Powder Room  
Garage

Lounge	5.6 x 5.4m
Dining	3.0 x 2.7m
Bed 1	4.0 x 4.1m
Bed 2	3.7 x 3.4m
Study	3.7 x 2.8m
<b>Total</b>	131m <sup>2</sup>
Garage	27m <sup>2</sup>
<b>Total Internal</b>	158m <sup>2</sup>



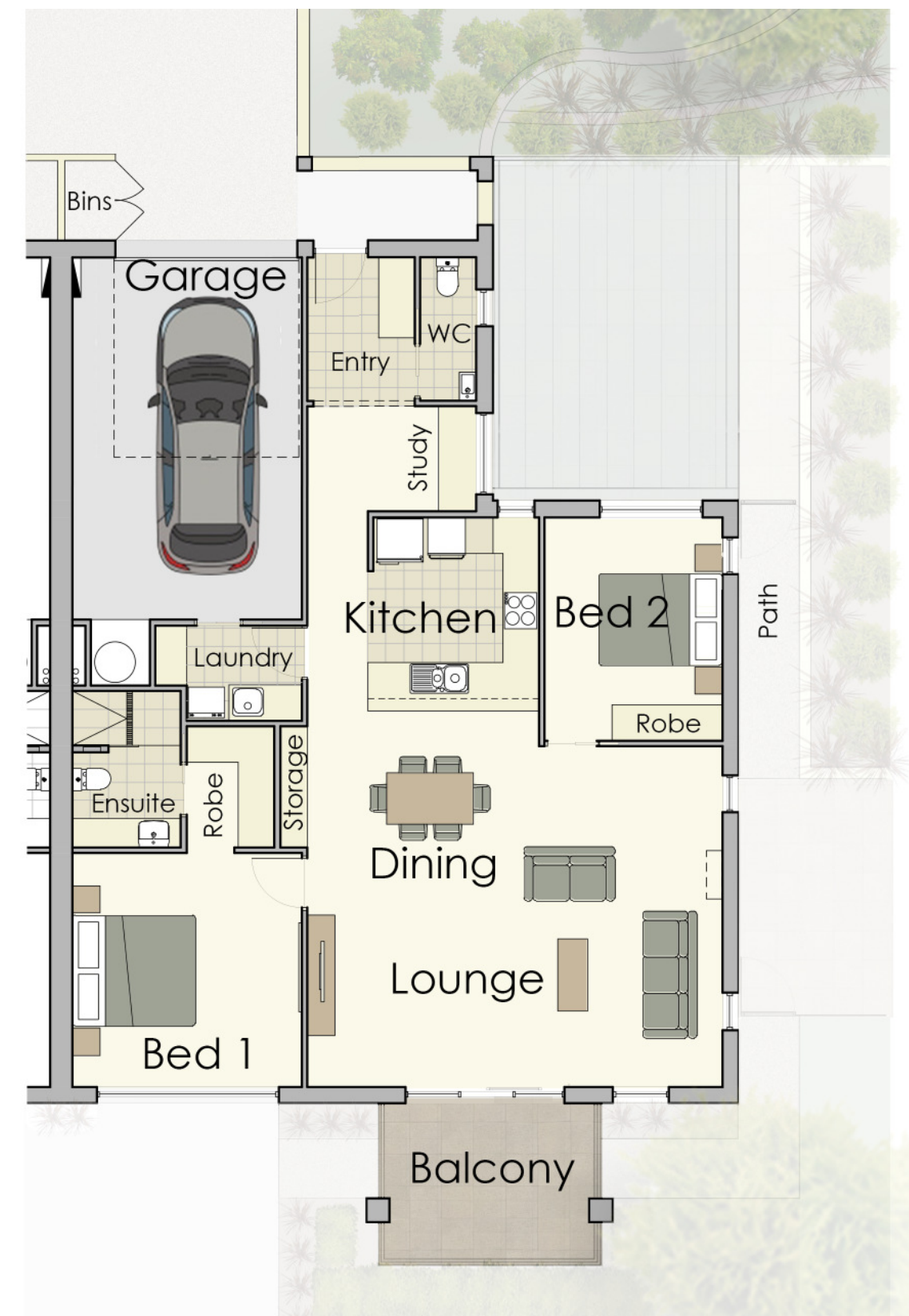


Southern Cross Care (Tas.) Inc.  
*Caring across Tasmania*

## Townhouse C Balcony

2 Bedroom  
1 Bathroom + Powder Room  
Garage

Lounge / Dining	6.3 x 5.3m
Bed 1	3.8 x 3.4m
Bed 2	2.9 x 3.7m
<b>Total</b>	107m <sup>2</sup>
Garage	23m <sup>2</sup>
<b>Total Internal</b>	130m <sup>2</sup>



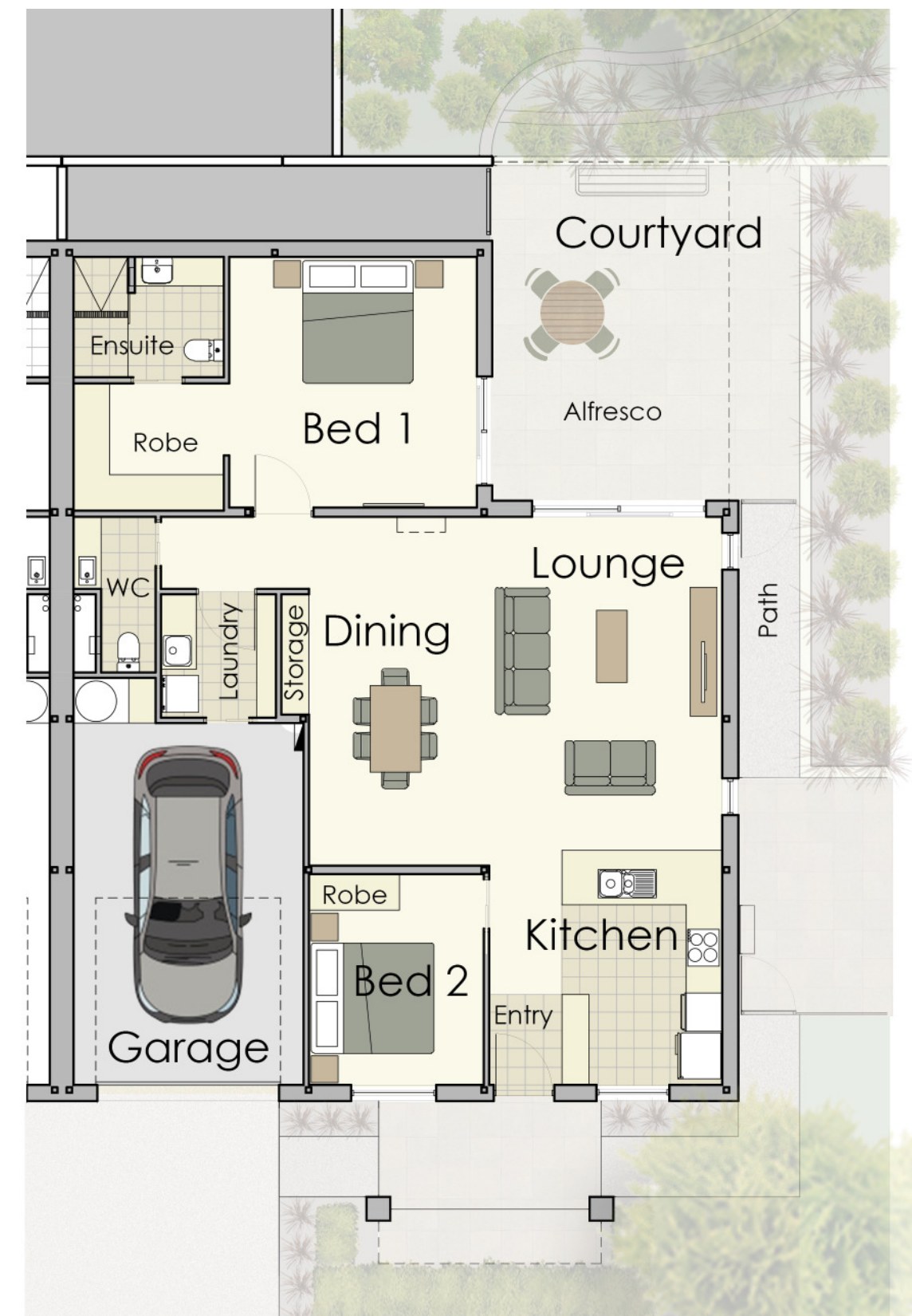


Southern Cross Care (Tas.) Inc.  
*Caring across Tasmania*

## Townhouse C Courtyard

2 Bedroom  
1 Bathroom + Powder Room  
Garage

Lounge	3.9 x 5.8m
Dining	2.9 x 5.8m
Bed 1	4.1 x 4.2m
Bed 2	2.9 x 3.5m
<b>Total</b>	107m <sup>2</sup>
Garage	23m <sup>2</sup>
<b>Total Internal</b>	130m <sup>2</sup>





**Southern Cross Care (Tas.) Inc.**  
*Caring across Tasmania*



## Villa D

2 Bedroom + Study  
1 Bathroom + Powder Room  
Garage

Lounge	4.7 x 5.2m
Dining	3.0 x 2.9m
Bed 1	3.4 x 4.0m
Bed 2	3.6 x 3.8m
Study	3.4 x 2.4m
<b>Total</b>	115m <sup>2</sup>
Garage	32m <sup>2</sup>
<b>Total Internal</b>	147m <sup>2</sup>





**Southern Cross Care (Tas.) Inc.**  
*Caring across Tasmania*



**Springhaven Lifestyle Village** | 38 Gordons Hill Road, Lindisfarne  
Website: [www.scctas.org.au/independent-living](http://www.scctas.org.au/independent-living)  
Telephone: 03 6282 5410

**Townhouse**

*Plans and images are indicative and subject to change*



**Southern Cross Care (Tas.) Inc.**  
*Caring across Tasmania*



**Springhaven Lifestyle Village** | 38 Gordons Hill Road, Lindisfarne  
Website: [www.scctas.org.au/independent-living](http://www.scctas.org.au/independent-living)  
Telephone: 03 6282 5410

**Typical Villa Interior**

*Plans and images are indicative and subject to change*



**Southern Cross Care (Tas.) Inc.**  
*Caring across Tasmania*



**Springhaven Lifestyle Village** | 38 Gordons Hill Road, Lindisfarne  
Website: [www.scctas.org.au/independent-living](http://www.scctas.org.au/independent-living)  
Telephone: 03 6282 5410

**Community Building**

*Plans and images are indicative and subject to change*